



Texas School for the Blind and Visually Impaired Outreach Programs

www.tsbvi.edu | 512-454-8631 | 1100 W. 45th St. | Austin, TX 78756

STAAR

November 14, 2017

3pm-4pm

Facilitated by

Valerie Bradshaw, TSBVI Testing Coordinator,
Comprehensive Programs

bradshawv@tsbvi.edu

Lynne McAlister, VI Education Consultant, TSBVI
Outreach

mcalisterl@tsbvi.edu

Developed for Texas School for the Blind & Visually Impaired
Outreach Programs

Outreach Programs Events Update:

- For upcoming webinars: <http://www.tsbvi.edu/2015-10-17-20-13-33/webinar-listings>
- For upcoming workshops and conferences: <http://www.tsbvi.edu/2015-10-17-20-13-33/outreach-workshops-conferences>
-

Housekeeping

- Download handouts and sign-in roster
- Send sign-in roster to sobeckb@tsbvi.edu or fax to 512-206-9320
- Make sure you registered and complete evaluation within 60 days including code for ACVREP/SBEC credit
- View captions in a separate window at <https://tcc.1capapp.com/event/tsbvi/embed>
- The code will be announced during the presentation

Adobe Connect Webinar Tour

- For tips about screen navigation go to http://www.connectusers.com/tutorials/2008/11/meeting_accessibility/
- Location of pods
- Power Point content included in your handout
- Poll participation – enter response in chat if you cannot access the poll

Link to enter room: <http://tsbvi.adobeconnect.com/staar/>

STAAR

Today's Agenda

- Welcome
- General administration instructions- Braille
- General administration instructions- LP
- Commonly used accommodations for VI
- Embedded Supports

General administration instructions – Braille

Student Materials and Designated Supports

- Accommodations you don't need to request
 - Number of lines in an essay
 - Response methods
 - Griddable questions
- Video of allowable materials

Orientation to Materials

- Video demonstrating orientation to materials

Specific Braille Instructions

- An example of specific braille instructions

General Large Print Instructions

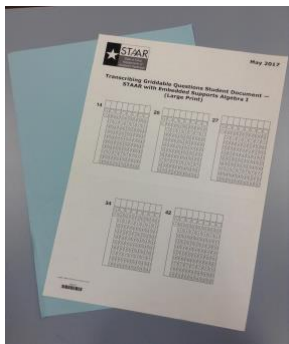


Figure 1 Picture of blue and white papers

TEA Revised Accommodations

For Braille Students

- Braille
- Two-day testing

For Low Vision Students

- Magnification
- Enlarging non-secure materials

Commonly used accommodations for VI

- Basic transcribing- different kinds
- Text to speech
- Spelling assistance
- Math manipulatives
- Manipulating test materials
- Positioning rulers and math manipulatives

Embedded Support

For braille and large print students:

- **Must order a paper admin through TEA!**

As of now the admin guide is in print but can be accommodated

- Released 2 weeks in advance
- Districts accommodate for students

What Does That Look Like?

- Test administrator becomes the link to the embedded support
- Three types of embedded supports:
 - Pop-ups
 - Roll-overs
 - Pre-Reads
- Video of teacher and student taking test

Questions

STAAR Accessibility Updates

- Student Testing and Accountability
- Student Assessment Overview
- Accommodation Resources
- 2018 Accessibility Resources
- 2018 STAAR Accessibility Updates

STAAR

November 14th 2017

Thank You for Joining Us!

Texas School for the Blind & Visually Impaired Outreach Programs



Figure 2: TSBVI logo



This project is supported by the U.S. Department of Education, Special Education Program (OSEP). Opinions expressed here are the authors and do not necessarily represent the position of the Department of Education.

Figure 3: IDEAs That Work logo and OSEP disclaimer